

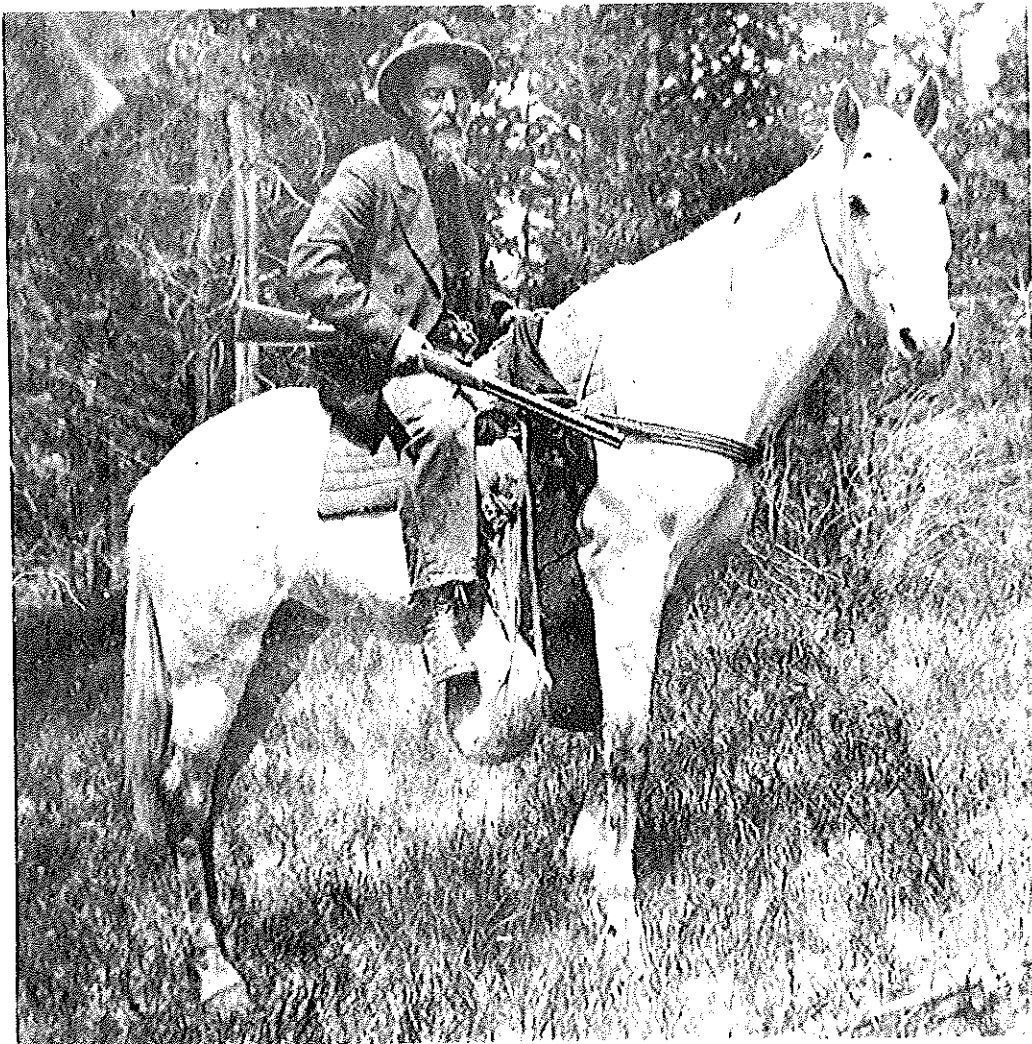
Kamloops, B.C., circa 1890, Father Pat's first home in B.C.

Vancouver City Archives Photo



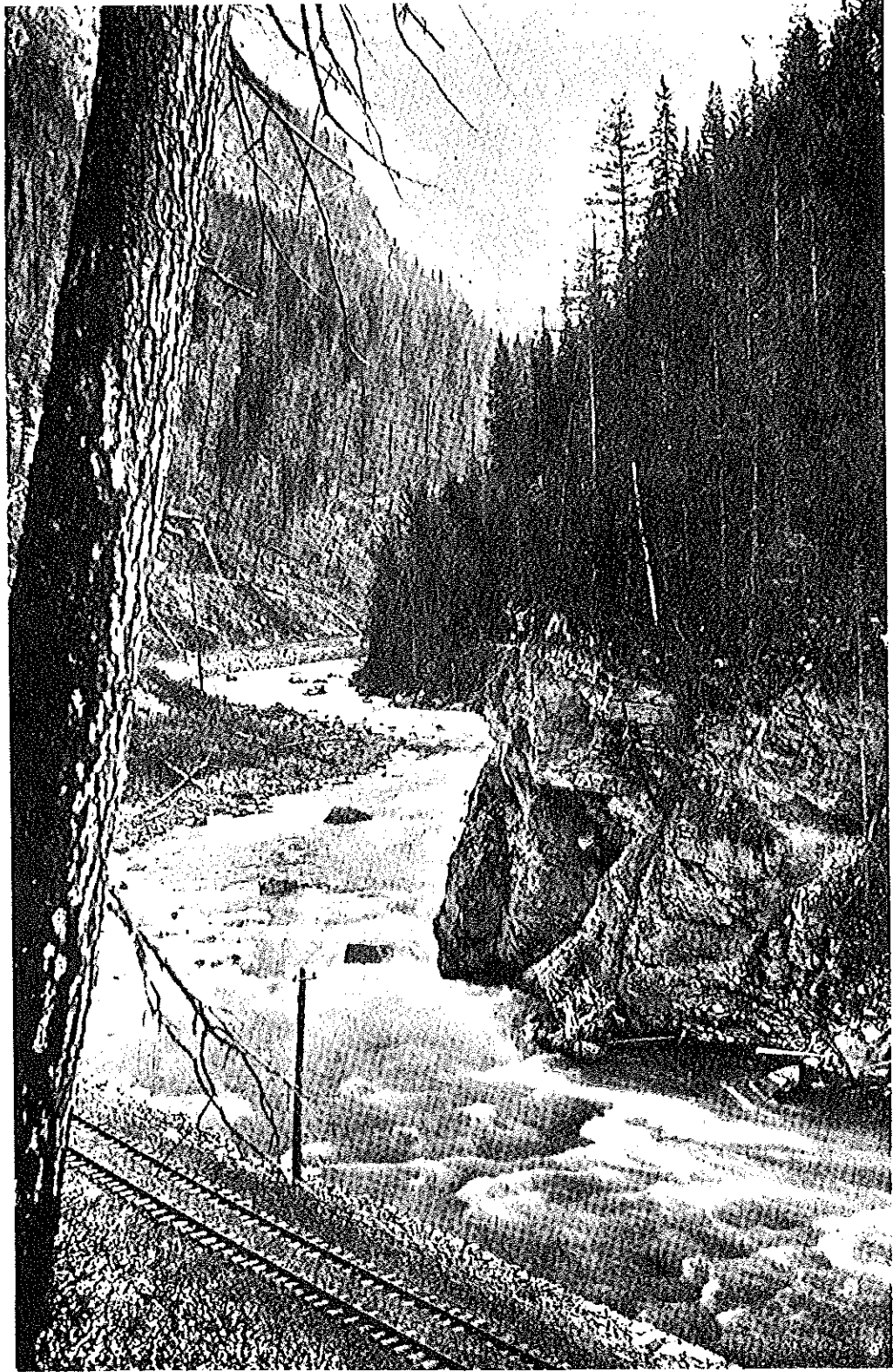
Right Reverend Acton Windeyer Sillitoe, D. D., first Lord Bishop of the Diocese of New Westminster. Father Pat was curate to Bishop Sillitoe.

Vancouver City Archives Photo



Father Pat on his horse, "Tom", travelling on the Dewdney Trail through the Okanagan in 1900.

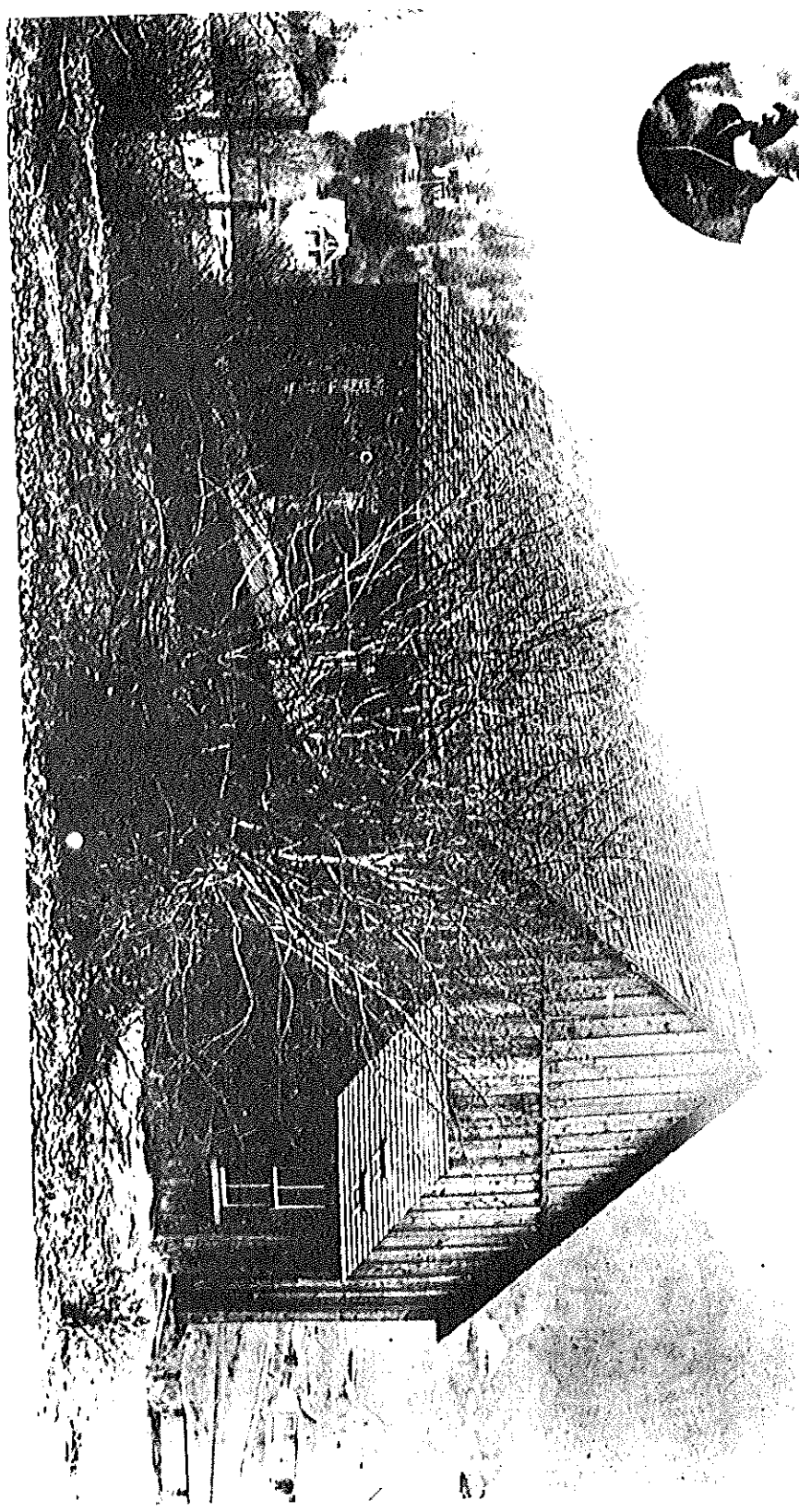
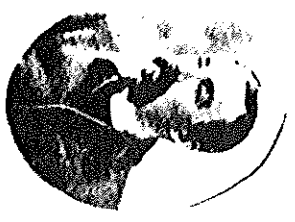
Mrs. W. R. Dewdney Photo



The Kicking-Horse Pass, Rocky Mountains.

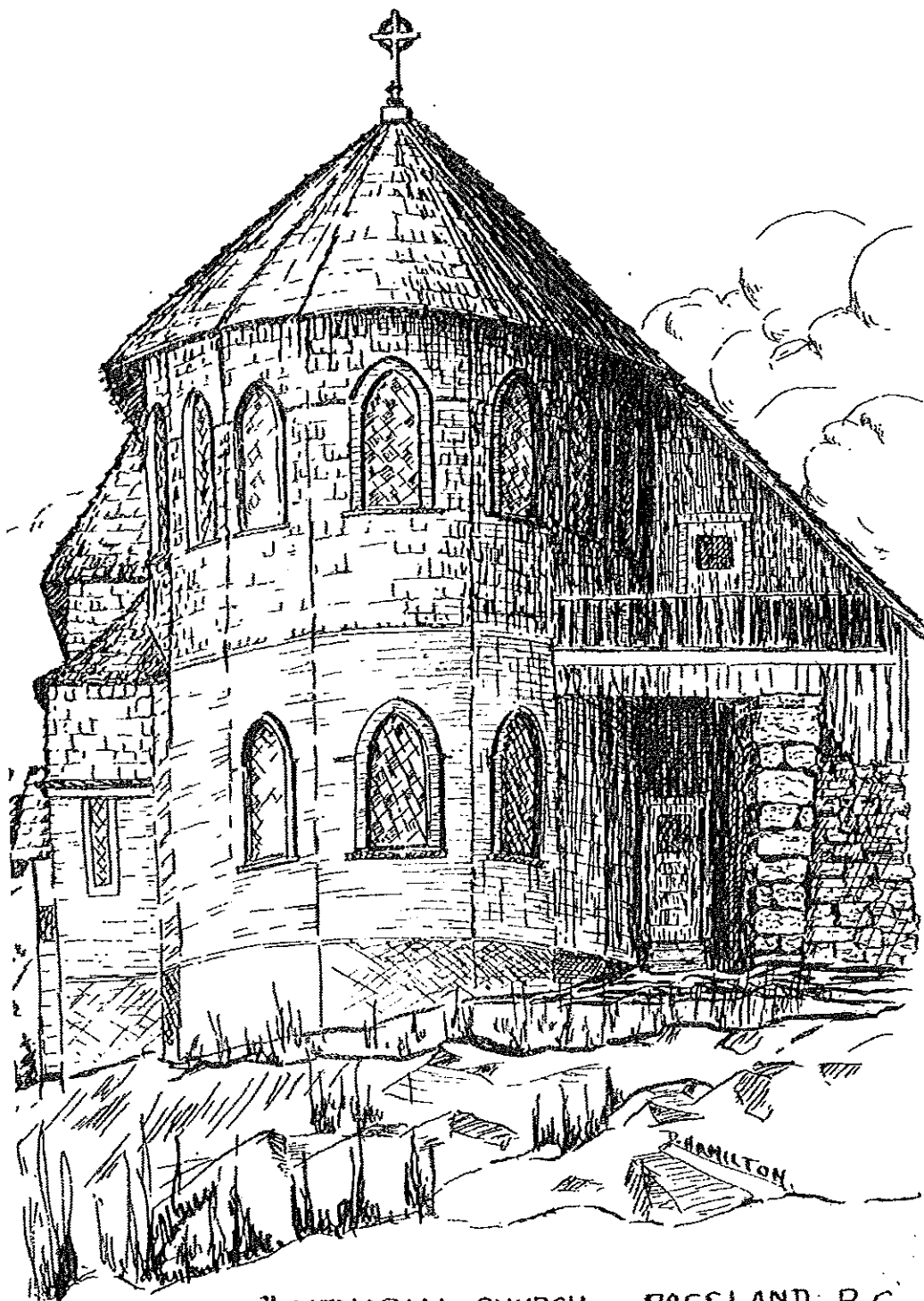


Father Pat with Bishop Sillitoe's Chinamen  
and favourite dogs, circa 1892.  
Provincial Archives, Victoria, B.C. Photo

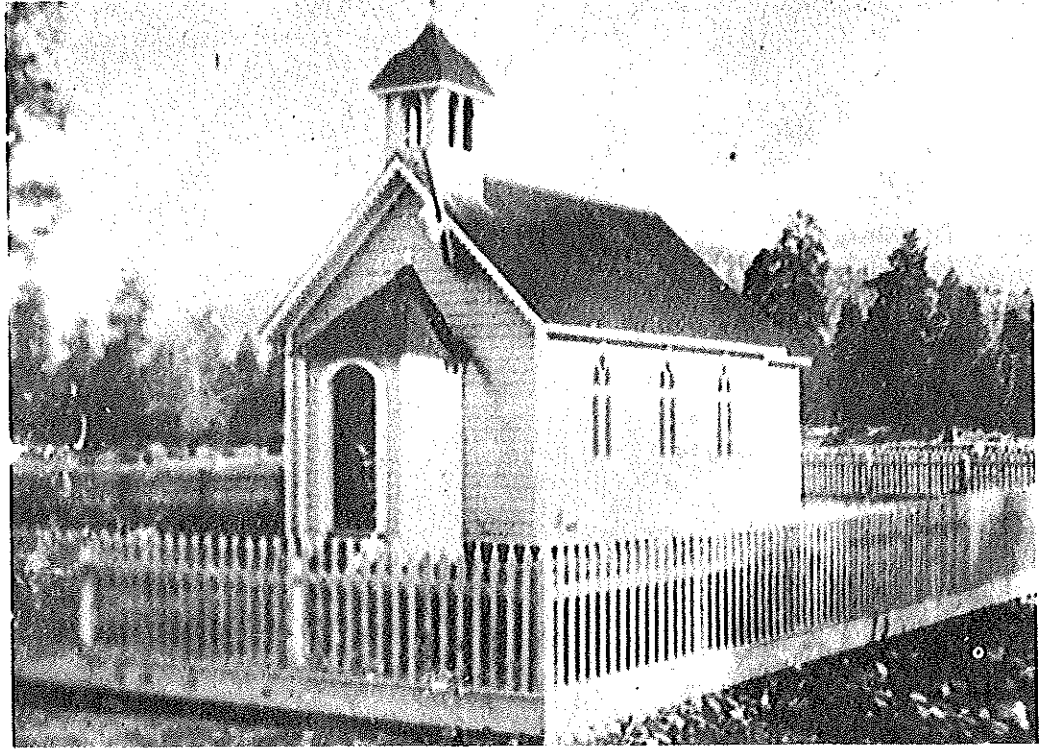


Church of England at Rossland, B.C., 1896

Provincial Archives, Victoria, B.C. Photo



"FATHER PAT" MEMORIAL CHURCH - ROSSLAND, B.C.



St. Saviour's Anglican Church, Penticton, B.C., 1892  
 Father Pat held services in this church.

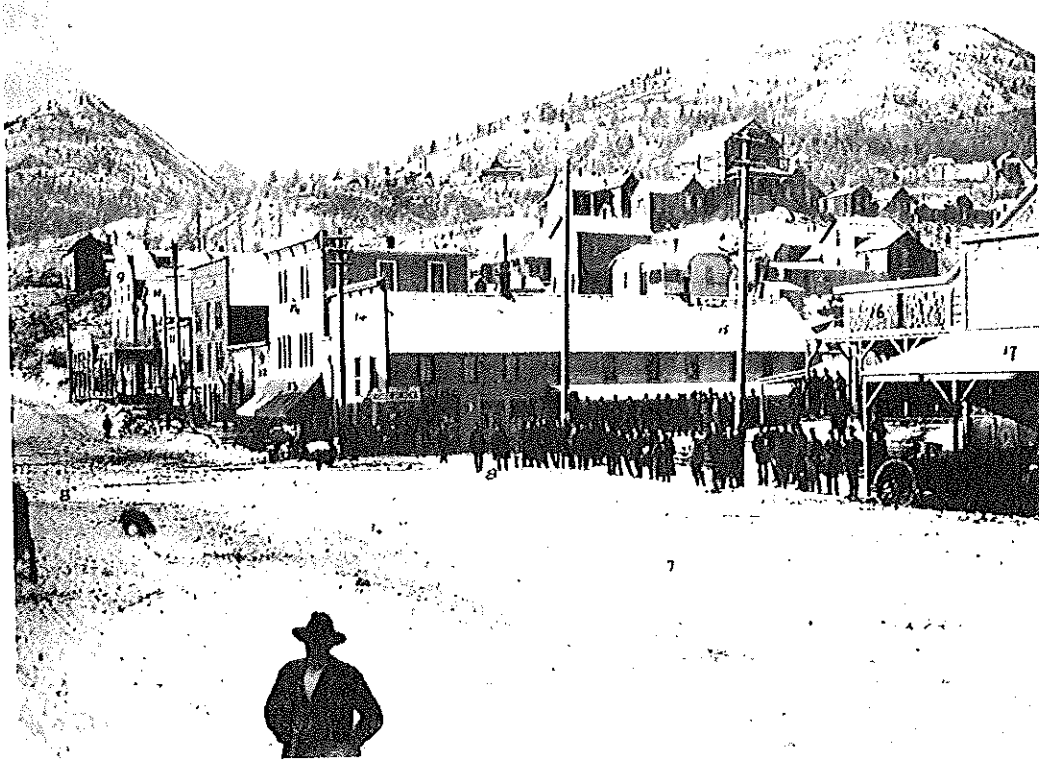
Mrs. W. R. Dewdney Photo



School at Midway, B.C., circa 1900. Father Pat  
 preached in this school.

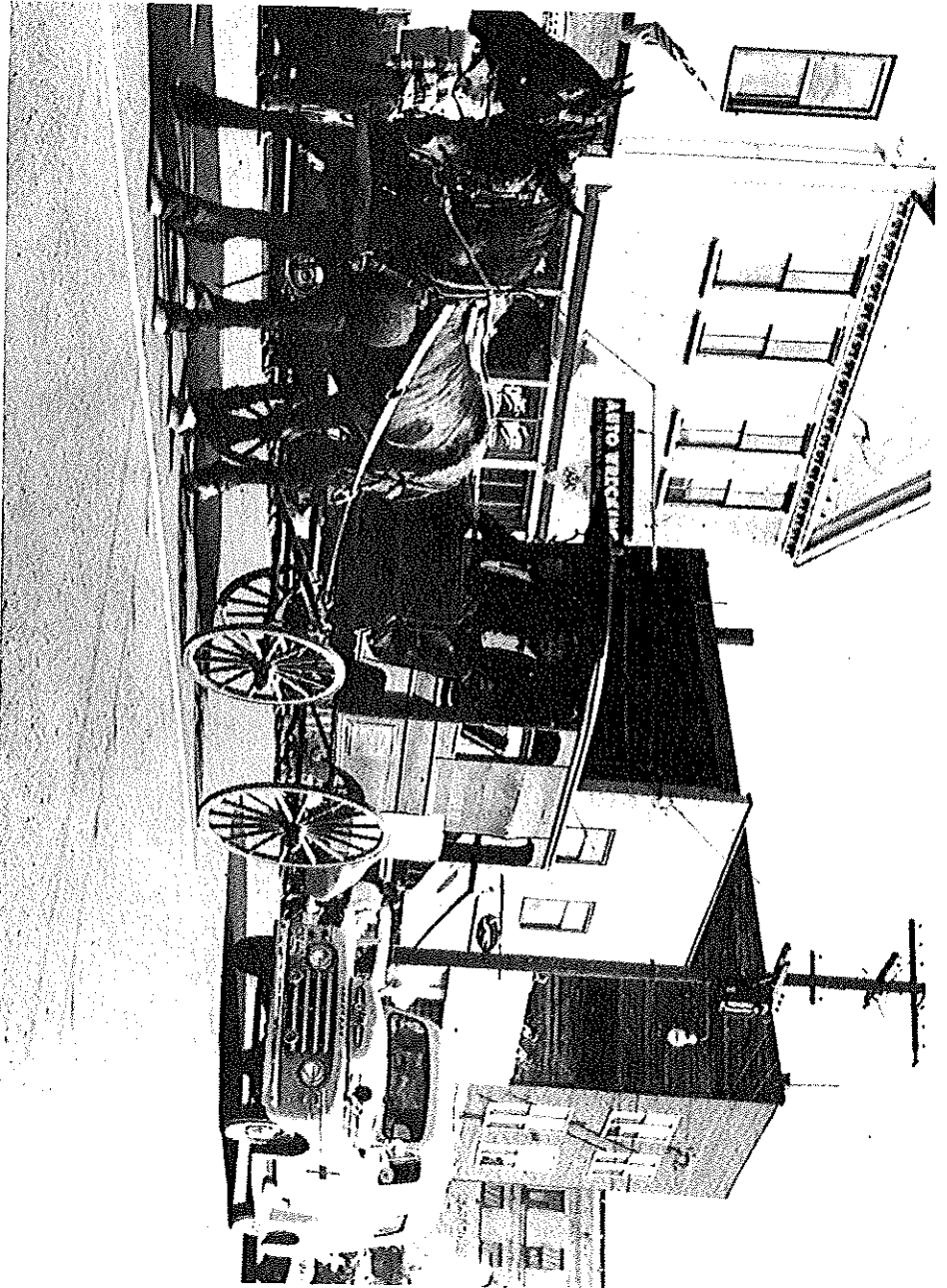
Mrs. W. R. Dewdney Photo





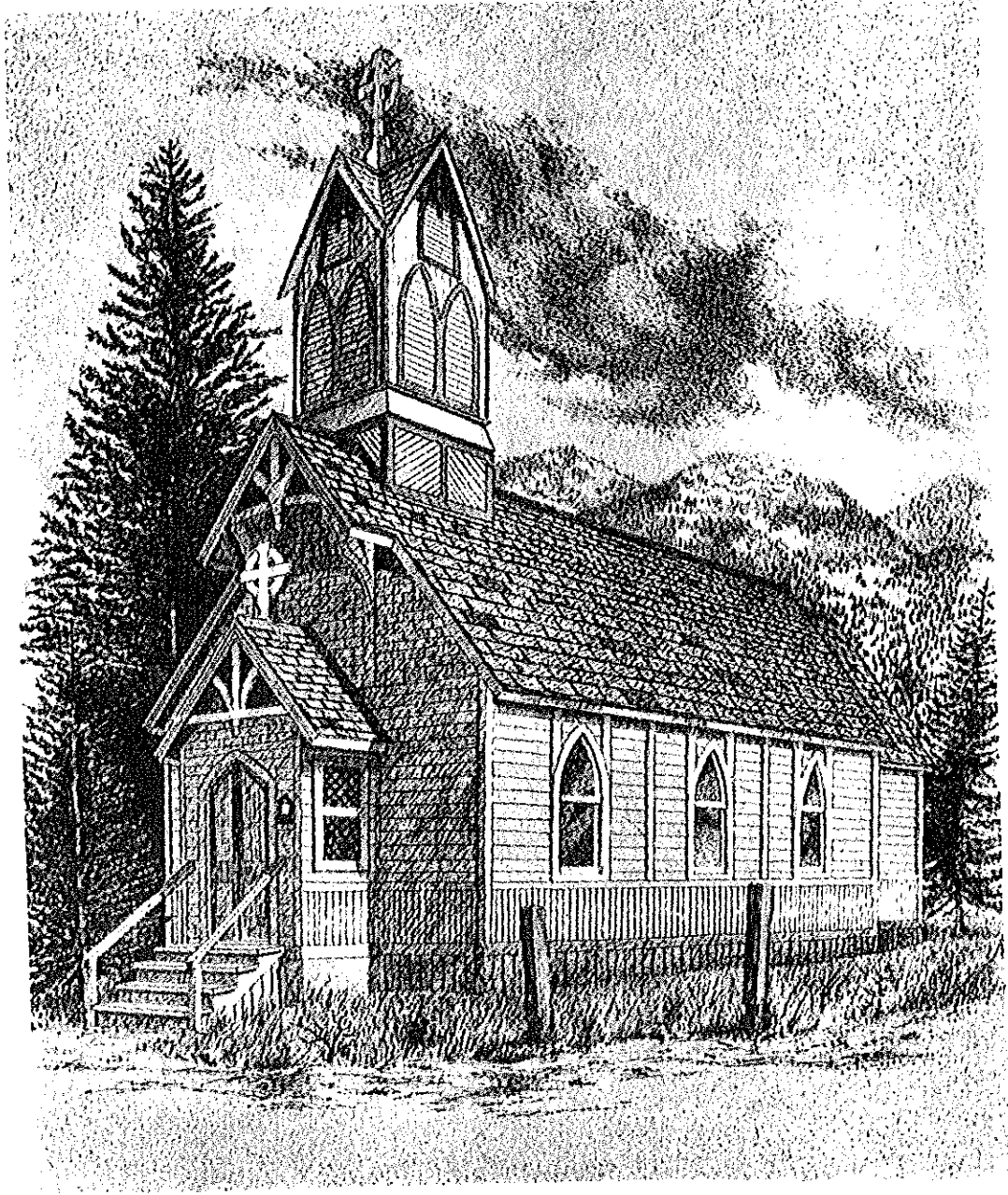
Rossland, B.C. circa 1900. Father Pat was appointed  
Mission Priest here in 1896.

1. Spokane Mtn., in 1902 named Mount (Lord) Roberts; 2. LeRoi Mine; 3. Wat Eagle Mine; 4. Centre Star Mine; 5. Nickle Plate Mine; 6. Red Mountain; 7. Columbia Ave; 8. Spokane St.—R. H. Trueman; 9. Travers Hardware; 10. Ritchie Blk; 11. Jas. Price, tailor; 12. Stussi's Store and first Post Office; 13, Shirley Bakery; 14, Pacific Hotel; 15, Grand Hotel; 16, Clifton Hotel; 17, Edgren's Store. Photo—City Archives, Vancouver.



Father Pat's ambulance in parade in Rossland, 1959. The miners donated the ambulance in his memory in 1902.

Provincial Archives,  
Victoria, B.C. Photo



St. Peter's, (the stolen church), in Windermere, B.C. Father Pat secured its erection at Donald in 1887.  
Capt. Otto Estabrooks Photo



Placer gold miners in front of cook house at Granite Creek, B.C.,  
in 1898. Father Pat preached to the miners here.

Mr. G. P. Broderick Photo



Fairview, B.C., 1894, Father Pat's last home in B.C.  
Rev. Alvin Miller Photo

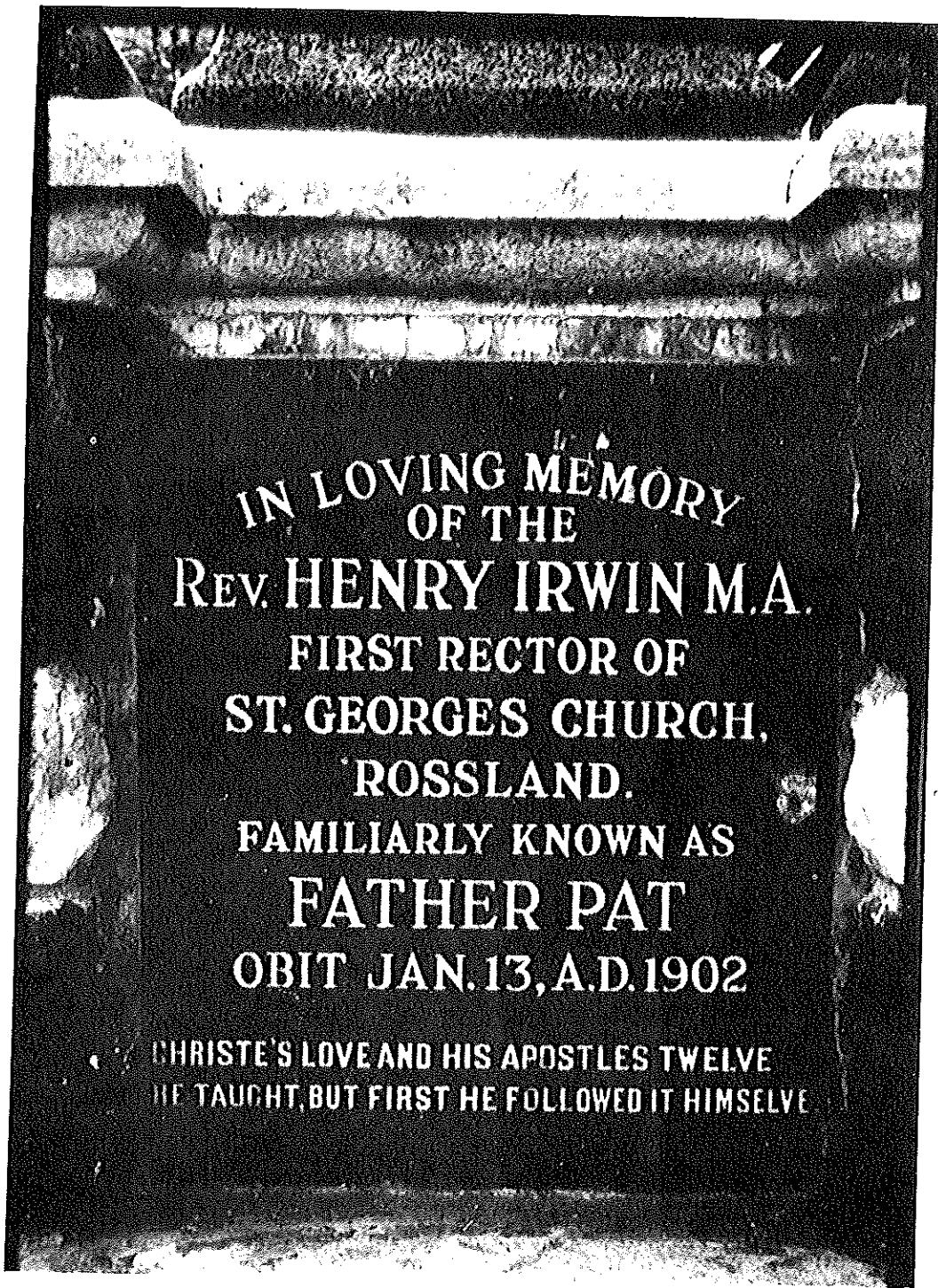


Photo by Don Whitham



IN MEMORIAM

FATHER PAT  
REV. HENRY IRWIN  
1860 — 1902

FIRST ANGLICAN MISSIONARY  
IN THE KOOTENAYS.  
WHO BUILT THE FIRST CHURCH  
IN THE ROCKIES.

THIS STONE WAS ERECTED  
BY OLDTIMERS  
1932.

*All things to all men.*

Memorial to Father Pat at Windermere, B.C.  
Provincial Archives, Victoria, B.C. Photo



Father Pat's monument in Rossland, B.C. circa 1910.  
Provincial Archives, Victoria, B.C. Photo